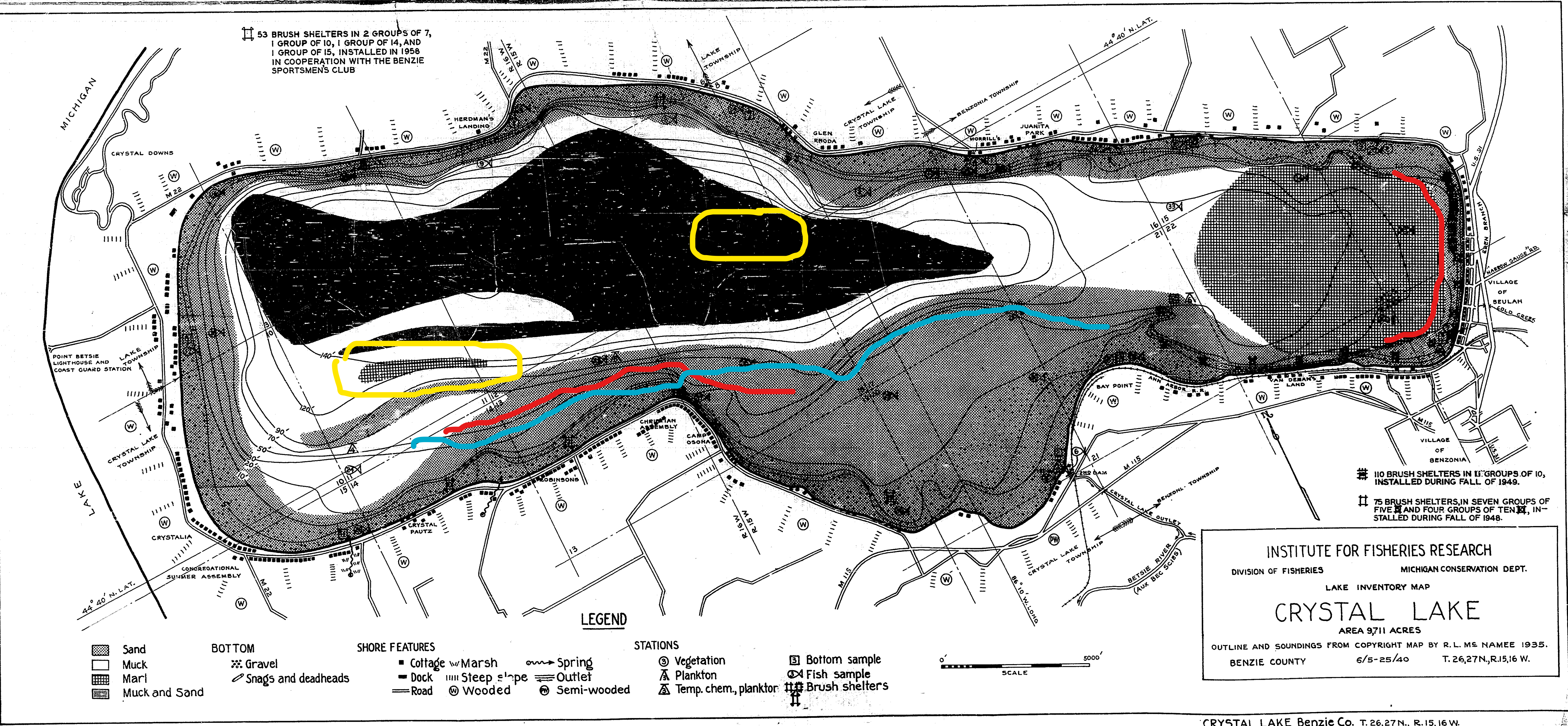


Crystal Lake is huge at 9,711 acres! There are so many species in this lake from smallmouth bass, whitefish, lake trout, burbot, northern pike, smelt, rock bass and more. It gets a lot of ice fishing pressure once it freezes with most folks targeting perch and lake trout. You'll have to do lots of sorting for the perch but there are some good ones. The lake trout are huge. Try jigging in the yellow areas and trolling the deep waters with downriggers. If you're jigging off bottom you may very well catch a nice burbot or freshwater cod. You may also catch a whitefish and I've seen some huge ones come out of Crystal! There are stocked rainbow trout and to my understanding they are found near Beulah. Another great thing about Crystal is the coho and steelhead fishing. You'll see the fishermen casting from Beulah on the shores in the Spring and Fall. The cohos are a lot of fun and most anglers use small spoons and rapalas while trolling. When you find them you will know from your fish graph. Talk about great eating and a fun fight! Heck, even the rock bass taste good out of this lake which is crazy. They get big and they don't stink like a normal rocky. The meat is whiter. The smelt fishing has really gone downhill unfortunately. The smallmouth fishing is spectacular. Fish the dropoffs marked in blue. Troll the red areas for the pike and let me tell you, They get huge and fat!

That being said, sometimes it feels like you're trying to find a needle in a haystack. It's such a big and deep lake. With a good graph and enough time put in you may just fall in love with lake. Just don't expect limits the first few times.

Try fishing 60 feet of water off of Lobb Road for the perch. The boat launch is newer at Mollineax Road but you have to walk away to your truck so be prepared to keep the line moving. The city of Beulah has a launch but it is not the greatest. There are other access points off Lobb Road and White Road and the marina off Crystal Road.



CRYSTAL LAKE Benzie Co. T. 26, 27 N., R. 15, 16 W.