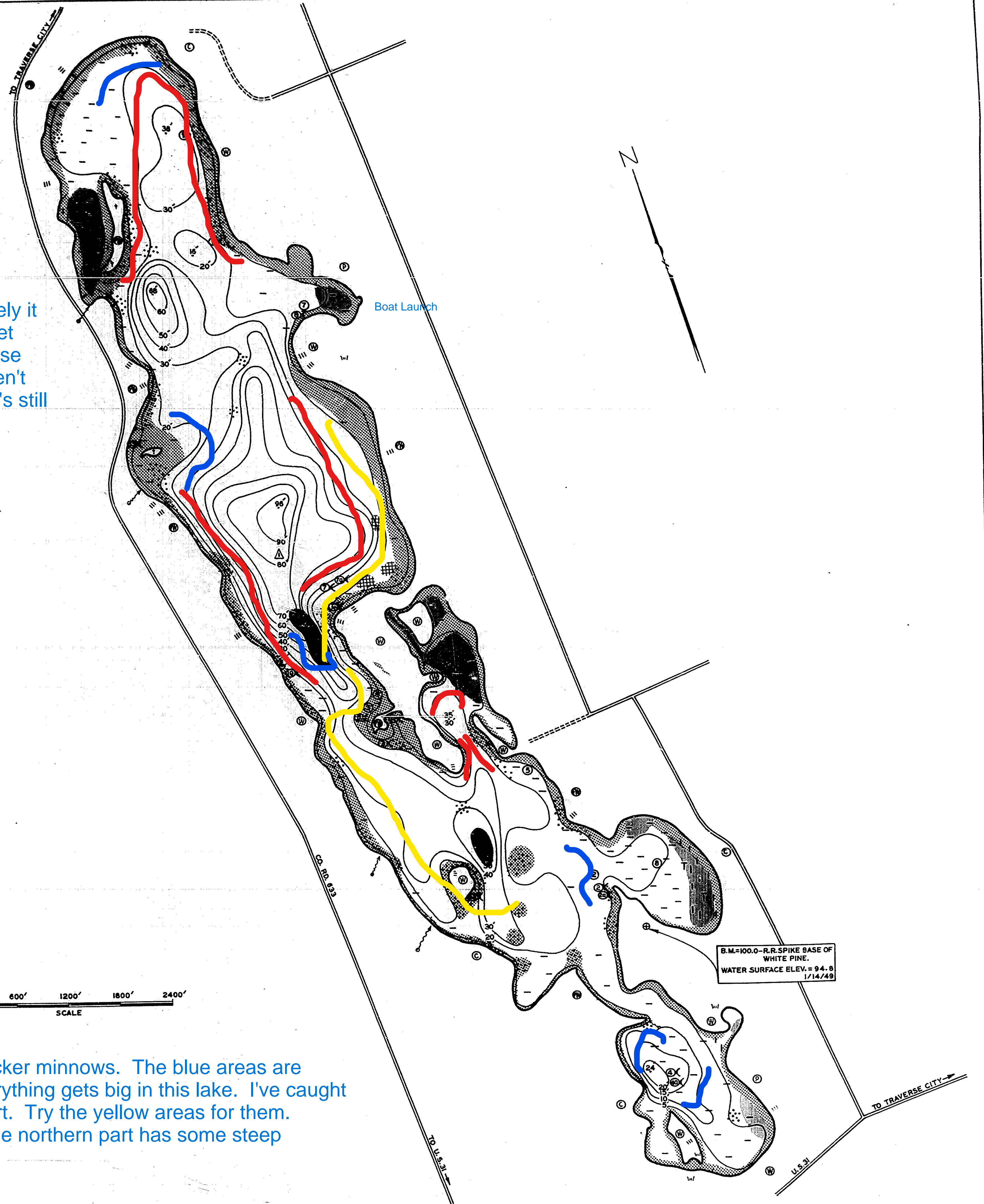


INSTITUTE FOR FISHERIES RESEARCH
 DIVISION OF FISHERIES MICHIGAN CONSERVATION DEPT.
 LAKE INVENTORY MAP
SILVER LAKE
 AREA 600 ACRES
 MARGINAL SURVEY AND SOUNDINGS INVENTORY 1/4,5,7,8,10-14/49
 7/20 & 8/3/50
 GRAND TRAVERSE COUNTY T.26-27 N.,R.11 W.,SEC'S.5,6,30,31

Silver Lake has an excellent fishery and it has a nice boat launch. Unfortunately it is extremely popular with recreational boaters and jet skis. You just have to get there early mornings and late afternoons to avoid them the best you can. Those are the best times to fish anyway. I haven't caught a small walleye yet. I haven't caught a ton but they were all nice! Friends have had success too. Overall, it's still an easier launch than Long Lake and less people fish it.

LEGEND

- BOTTOM**
- Sand
 - Marl
 - Pulpy peat
 - Fibrous peat
 - Muck
 - Gravel
- OUTLINE & CONTOURS**
- Shoreline
 - Contours
- SHORE FEATURES**
- Slope
 - Spring
 - Marsh
 - Brush
 - Wooded
 - Partly wooded
 - Pasture
 - Cultivated
 - Dock
 - Improved road
 - Unimproved road
- VEGETATION**
- Emergent
 - Submergent
 - Floating
- STATIONS**
- Temp. chem. analysis
 - Vegetation
 - Fish sample



The DNR in the last five years alone have planted millions of walleye fry. Try the areas trolling in red. I recommend crawler harnesses and rapalas/flicker minnows. The blue areas are where I'd try for big bluegill and both largemouth and smallmouth bass. Everything gets big in this lake. I've caught a few nice pike as well. They run between 18 and 30 inches for the most part. Try the yellow areas for them. Explore the whole lake. The southern part of the lake is much shallower. The northern part has some steep dropoffs into some deep water. Fish those for huge smallmouth bass.