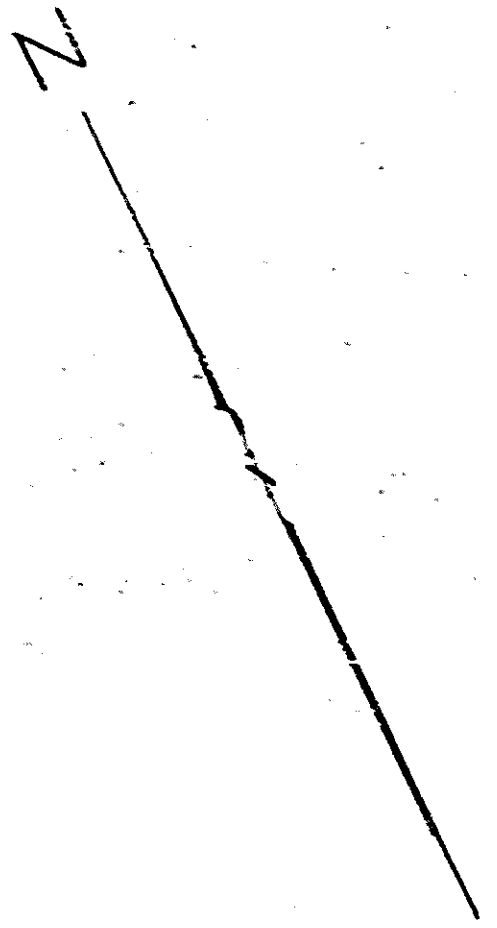


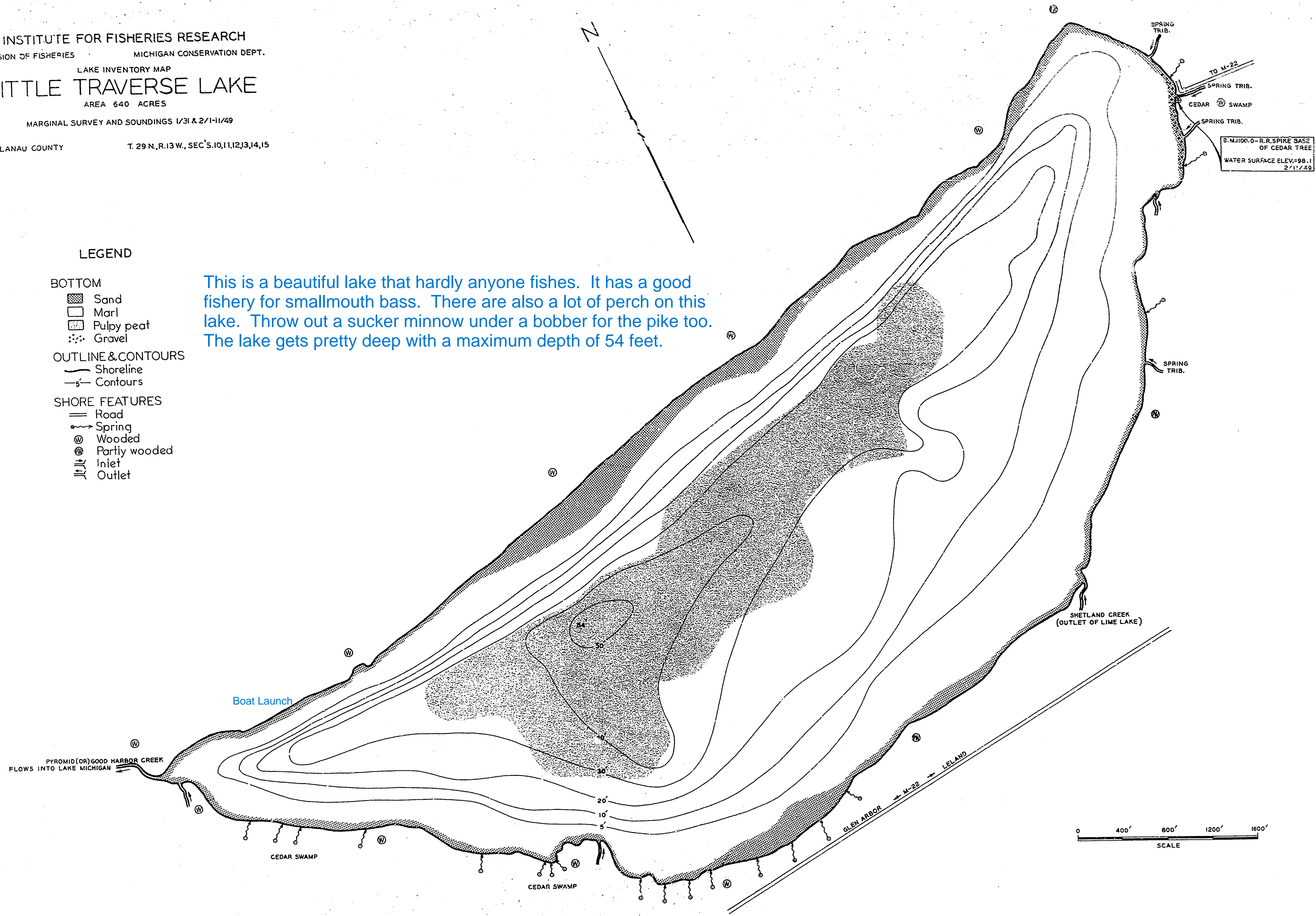
INSTITUTE FOR FISHERIES RESEARCH
 DIVISION OF FISHERIES MICHIGAN CONSERVATION DEPT.
 LAKE INVENTORY MAP
LITTLE TRAVERSE LAKE
 AREA 640 ACRES
 MARGINAL SURVEY AND SOUNDINGS 1/31 & 2/11/49
 LEEFLANAU COUNTY T. 29 N., R. 13 W., SEC'S. 10, 11, 12, 13, 14, 15



LEGEND

- BOTTOM**
- Sand
 - Marl
 - Pulpy peat
 - Gravel
- OUTLINE & CONTOURS**
- Shoreline
 - Contours
- SHORE FEATURES**
- Road
 - Spring
 - Wooded
 - Partly wooded
 - Inlet
 - Outlet

This is a beautiful lake that hardly anyone fishes. It has a good fishery for smallmouth bass. There are also a lot of perch on this lake. Throw out a sucker minnow under a bobber for the pike too. The lake gets pretty deep with a maximum depth of 54 feet.



E. M. 100.0 - R. R. SPIKE BASE
 OF CEDAR TREE
 WATER SURFACE ELEV. = 98.1
 2/17/59